

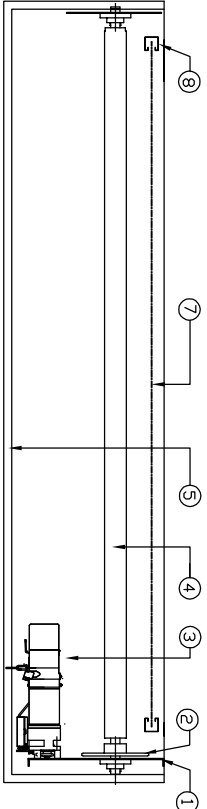
CHUNG TAI  
 ROLLER SHUTTERS CO. LTD.  
 UNIT 7, G/F, KIN FAT INDUSTRIAL CENTRE,  
 KIN FAT ST., TUEN MUN, N.T.  
 TEL: +852 2465 9323 FAX: +852 2456 1364  
 E-mail: info@chungtai-irs.com.hk

DRAWING NO. : Weave Mesh Curtain  
 COMPONENTS OF STAINLESS STEEL (GRADE 316) WEAVE MESH  
 CURTAIN MOTOR OPERATED SECURITY ROLLER SHUTTER  
 織網簾頁安防電動開組件圖

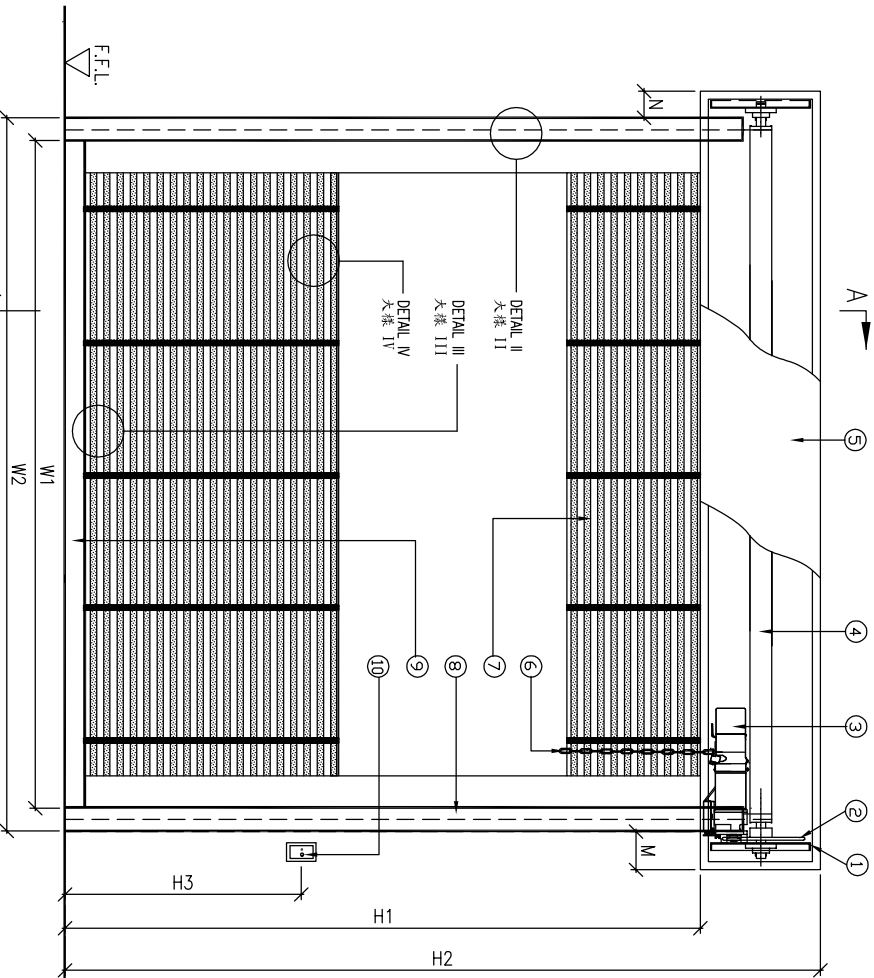
RS335

R-十	N	M	H3
DIMENSION	0-100	150-200	1200

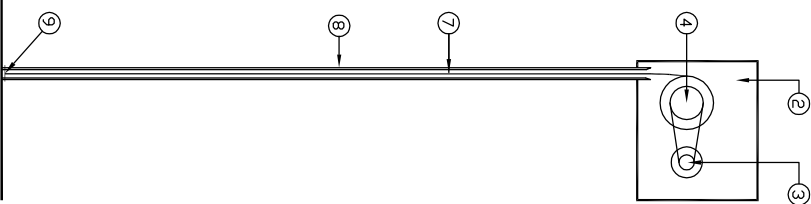
PLAN  
 平面圖



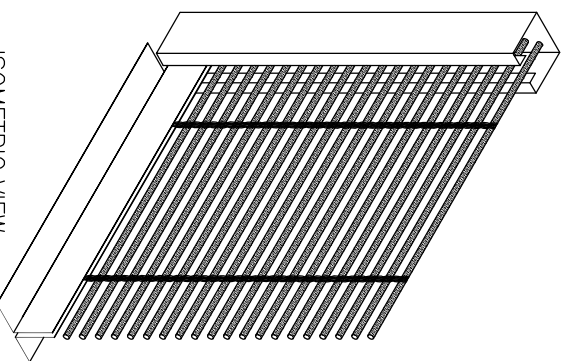
ELEVATION  
 立視圖



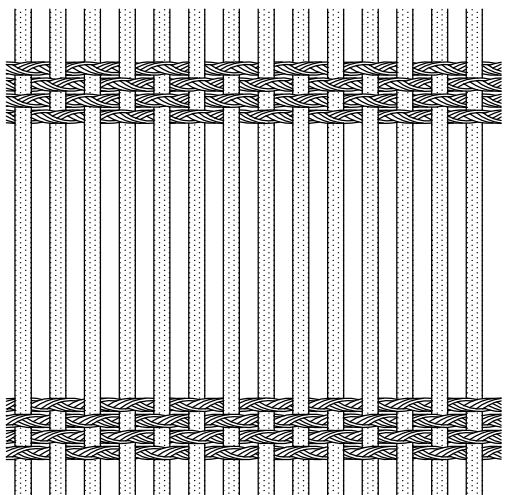
SECTION A-A  
 切面 A-A



ISOMETRIC VIEW  
 透視圖



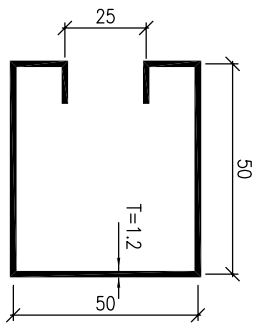
DETAIL I WEAVE MESH  
 大樣 I 織網



- 1. SIDEPLATE
- 2. TRANSMISSION GEAR
- 3. MOTOR
- 4. BARREL
- 5. SHUTTER HOOD
- 6. MANUAL CHAIN
- 7. STAINLESS STEEL WEAVE MESH CURTAIN
- 8. GUIDE RAIL
- 9. BOTTOM BAR
- 10. PUSH BUTTON

- 1. 側板
- 2. 鏈輪
- 3. 電機
- 4. 捲軸
- 5. 閘箱
- 6. 手動鏈條
- 7. 織鋼簾頁
- 8. 導軌
- 9. 底座
- 10. 按鈕

DETAIL II (GUIDE RAIL)  
 大樣 II 導軌



DETAIL III (BOTTOM BAR)  
 大樣 III 底座

